

Industry Institute partnership Cell of IEST with different Corporate Collaborators



Cognizant - BESU Innovation Laboratory

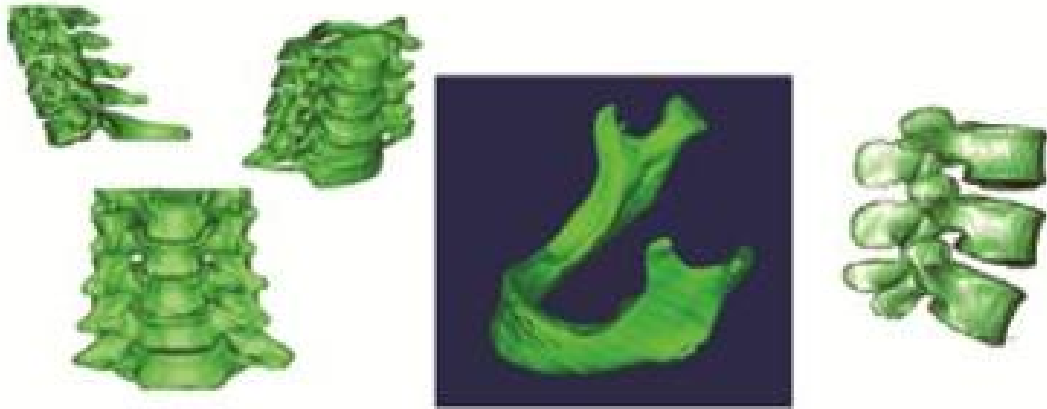
The Cognizant - BESU innovation Laboratory has been established during 2012-13 academic year. This Open Source Software (OSS) laboratory is an advanced state-of-the-art industry-university setup aimed at fostering a long-term relationship with Cognizant and BESU in the areas of training and research and development. It is agreed that both parties will actively engage themselves in the practical applications and implications OSS while other fundamental research and training activities will also be pursued



Prof. A.M. Ray (C.M.D.) (2nd from left), Prof. A.M. Ray (C.M.D.) (2nd from right), Prof. A.M. Ray (C.M.D.) (1st from right) and Prof. A.M. Ray (C.M.D.) (1st from left)



Prof. A.M. Ray (C.M.D.) (1st from left), Prof. A.M. Ray (C.M.D.) (2nd from left), Prof. A.M. Ray (C.M.D.) (3rd from left), Prof. A.M. Ray (C.M.D.) (4th from left), Prof. A.M. Ray (C.M.D.) (5th from left), Prof. A.M. Ray (C.M.D.) (6th from left), Prof. A.M. Ray (C.M.D.) (7th from left), Prof. A.M. Ray (C.M.D.) (8th from left), Prof. A.M. Ray (C.M.D.) (9th from left) and Prof. A.M. Ray (C.M.D.) (10th from left)



implants: each vertebra is held in place by the surrounding bony ring to which are attached the ligaments. These



by the system. This is the type of minimally invasive approach that is used for a minimally invasive approach and



any other information regarding the project or the work of the team can be found at www.nerc.gov or by contacting the project manager at nerc@nerc.gov.





Figure 1: A large spherical object with a screen displaying a woman's face, used for monitoring energy consumption.

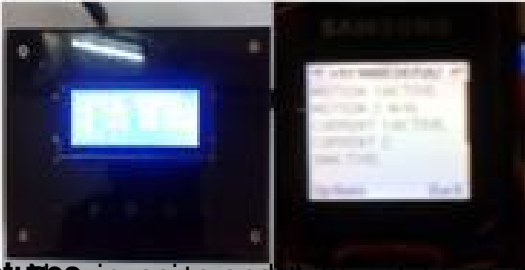
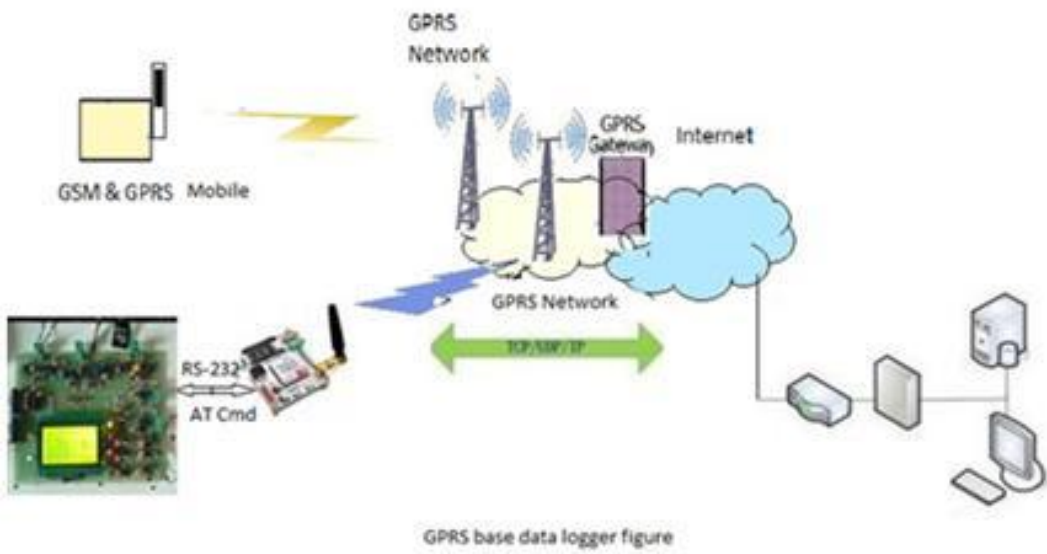


Figure 2: Screens displaying data or graphs, used for monitoring energy consumption.



Real Time GPRS Remote Monitoring System for PV Air Pollution measurement in

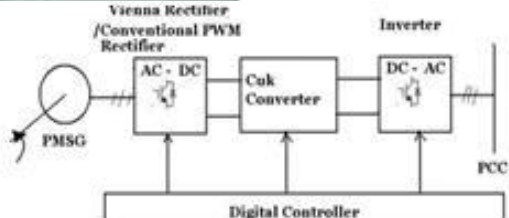


Research highlights: leakage from LPG cylinders and storage in kitchen in different applications
Permeation through polymeric materials (without water) depending on the gas concentration





Applications include: Motor Control, Signal Conditioning, Data Acquisition, and Power Conversion.



Keywords: PMSG, AC-DC Converter, Cuk Converter, DC-AC Inverter, Digital Controller, FCC.



Medical sensors measurement system of Malthacker for different applications



Medical cable for signal conditioning (present in hazardous area) connected to digital signal conditioning unit (Malthacker Electronics Technology, China)



Solar Street Light LED Lamp, Newipun, Kolkata by Centre of Excellence for Green Energy and