

Dated: 23rd August 2016

Notice Inviting Quotations

Sealed quotations are invited from manufacturers, suppliers and agents for the following item as mentioned below:

Item No. 1 Development, Manufacturing and Assembly of a mechanical motor gear pulley belt driven Ankle Foot as per the attached drawings:

Tolerance -As specified (0.01 mm - if not mentioned)

Drive Type - motor driven (to be provided by IEST)

Material as specified in the drawings with proper strength and finishing to carry the standing and walking load of an adult person of 70 Kg. weight.

Provision for fitting control unit

Quantity - 1 complete setup

Delivery time: 10 days from the date of placement of order.

The sealed quotation should be submitted to Prof. Subhasis Bhaumik, Coordinator, School of Mechatronics & Robotics, 3rd Floor, New Science & Technology Building, Indian Institute of Engineering Science & Technology, Shibpur, Howrah - 711103, West Bengal, INDIA

Last date of submission : 31.08.2016 (Wednesday) upto 2.00 p.m.;

Date of opening : 31.08.2016 (Wednesday) at 3.00 p.m.

(Subhasis Bhaumik)

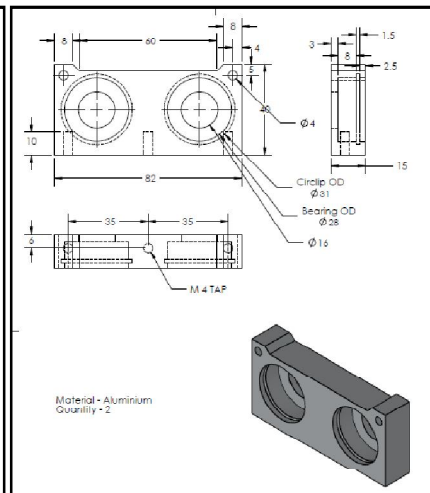
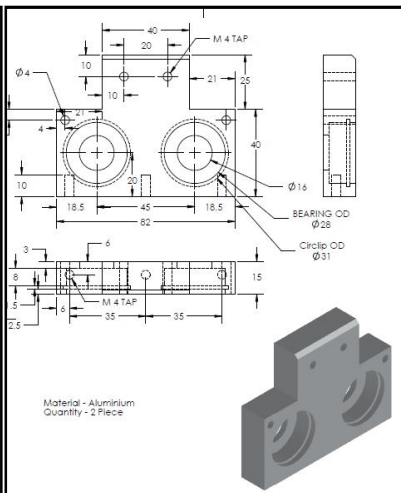
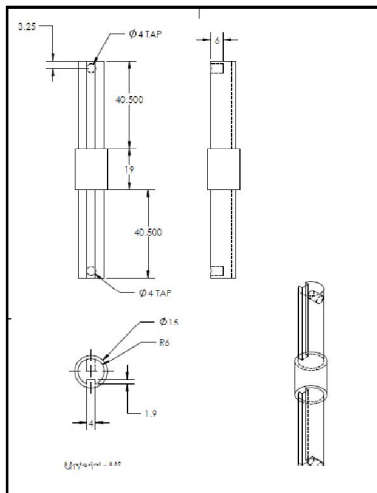
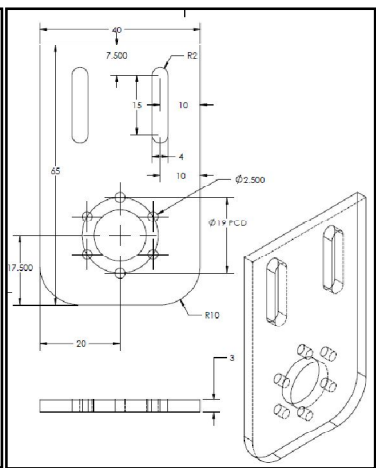
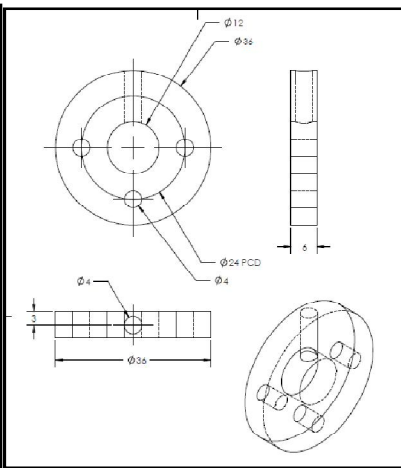
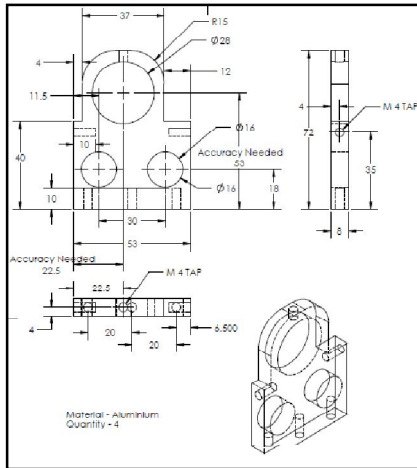
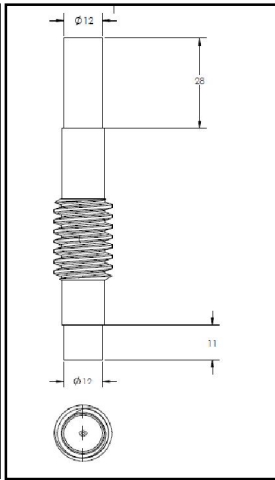
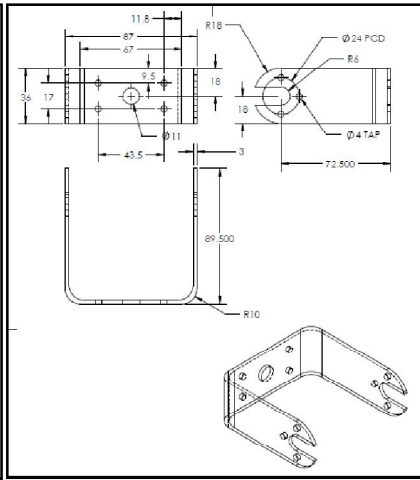
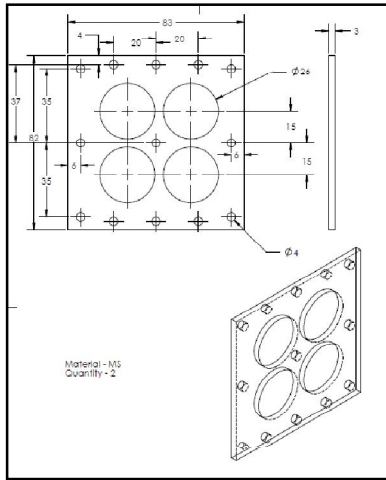
Co-ordinator, School of Mechatronics & Robotics

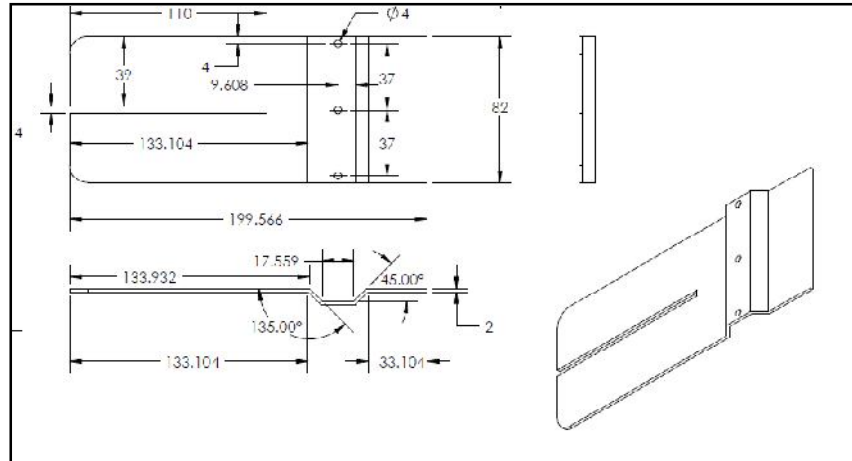
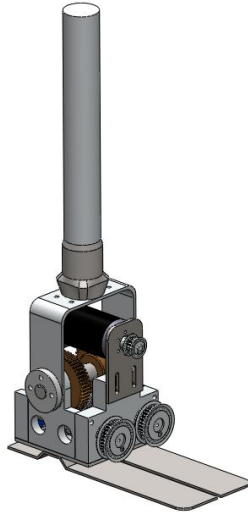
IEST Shibpur

Copy to : (1) Notice Board of SM&R

(2) Institute Website

Encl: Schematic mechanical drawings of the ankle foot





<p>Fig. 1</p>	Timing Belt Pulley, 5mm pitch	10 mm wide
	No of Grooves	15
	PD	24.05 mm
	D	23.05 mm
	D1	26
	D	4
	D2	16
<p>Fig. 1</p>	Timing Belt Pulley, 5mm pitch	10 mm wide
	No of Grooves	20
	PD	32
	D	31
	D1	36
	D	6
	D2	23
Set Screw	M3	
<p>Fig. 2</p>	Worm Gear, Single thread, Al-bronze, Right handed with keyway	
	No of Teeth	50
	PD	50
	D	53.5
	D	12
	D1	30
	W	4
T	1.8	