

School of Mechatronics & Robotics
Indian Institute of Engineering Science and Technology, Shibpur
Howrah 711 103 INDIA

Advt.No WEB/IIEST/MECH/17-18/15

Dated: 29th May 2017

Notice Inviting Quotations

Sealed quotations are invited from manufacturers / fabricator / supplier for the following item as mentioned below:

Item No. 1 Ankle foot as per the attached drawings complete with assembly

Tolerance - As specified in the drawing

Drive Type - Motor driven (IIEST will provide)

Material as specified in the drawings.

Carbon fibre foot with proper shape and curvature

Quantity - 1 complete assembled setup

Delivery time: 10 days from the date of placement of order.

The sealed quotation should be submitted to Prof. Subhasis Bhaumik, Coordinator, School of Mechatronics & Robotics, 3rd Floor, New Science & Technology Building, Indian Institute of Engineering Science & Technology, Shibpur, Howrah - 711103, West Bengal, INDIA

Last date of submission : 8.06.2017 (Thursday) upto 2.00 p.m.;

Date of opening : 8.06.2017 (Thursday) at 3.00 p.m.

(Subhasis Bhaumik)

Co-ordinator, School of Mechatronics & Robotics

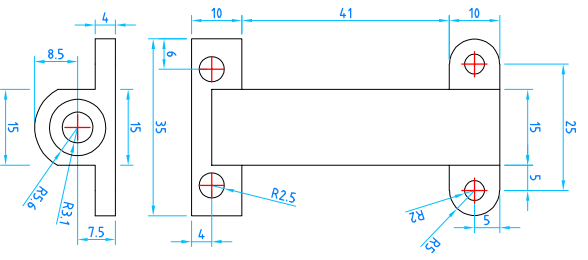
IIEST Shibpur

Copy to : (1) Notice Board of SM&R

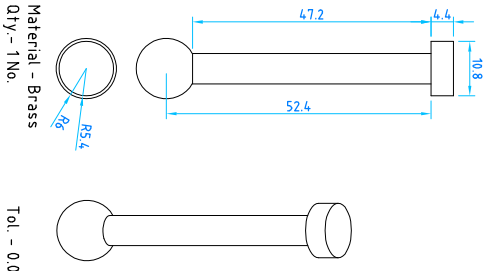
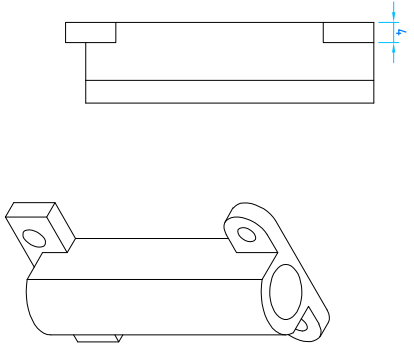
(2) Institute Website

Encl: Drawings of the ankle foot.

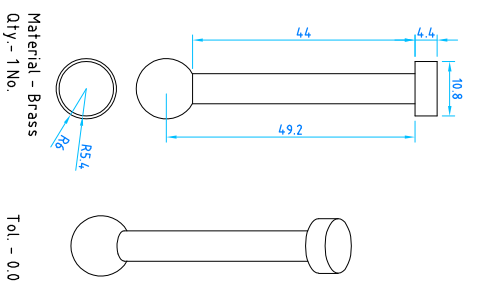
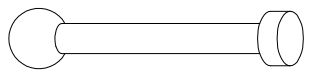
1	Rev. No.	XX	Revision note	2	3	4
---	----------	----	---------------	---	---	---



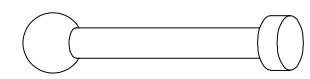
Material - High tensile alloy steel (EN24)
Qty - 2 Nos.
Tol. - 0.01 mm



Material - Brass
Qty - 1 No.
Tol. - 0.01 mm



Material - Brass
Qty - 1 No.
Tol. - 0.01 mm

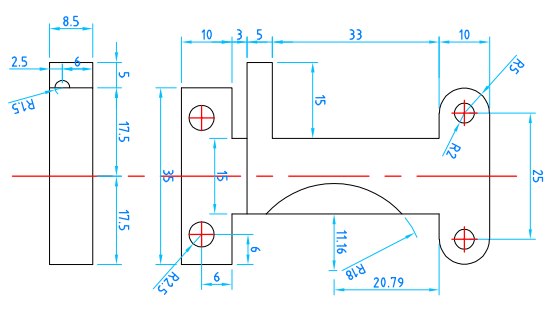


Item#	Title/Name, designation, material, dimension etc			Article No./Reference	Scale
Designed by HBMA	Checked by RR	Approved by - date SB	File name FILENAME	Date DATE	NTS

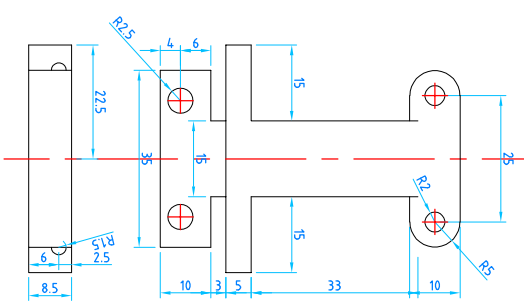
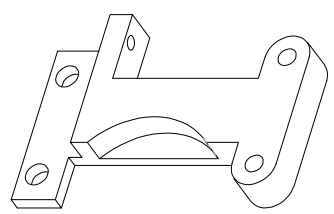
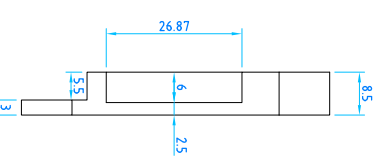
CYLINDER & PISTON

DWG. NO.:	REVISION	Sheet
	0	SHEET

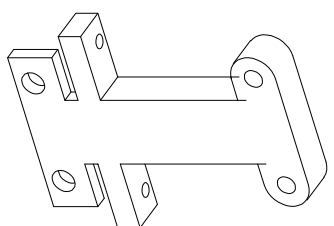
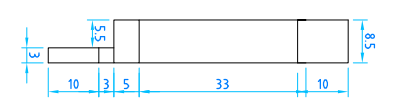
1	Rev. No.	XX	Revision note	2	3	4
---	----------	----	---------------	---	---	---



Material - High tensile alloy steel (EN24)
Qty - 1 No.
Tol. - 0.01 mm



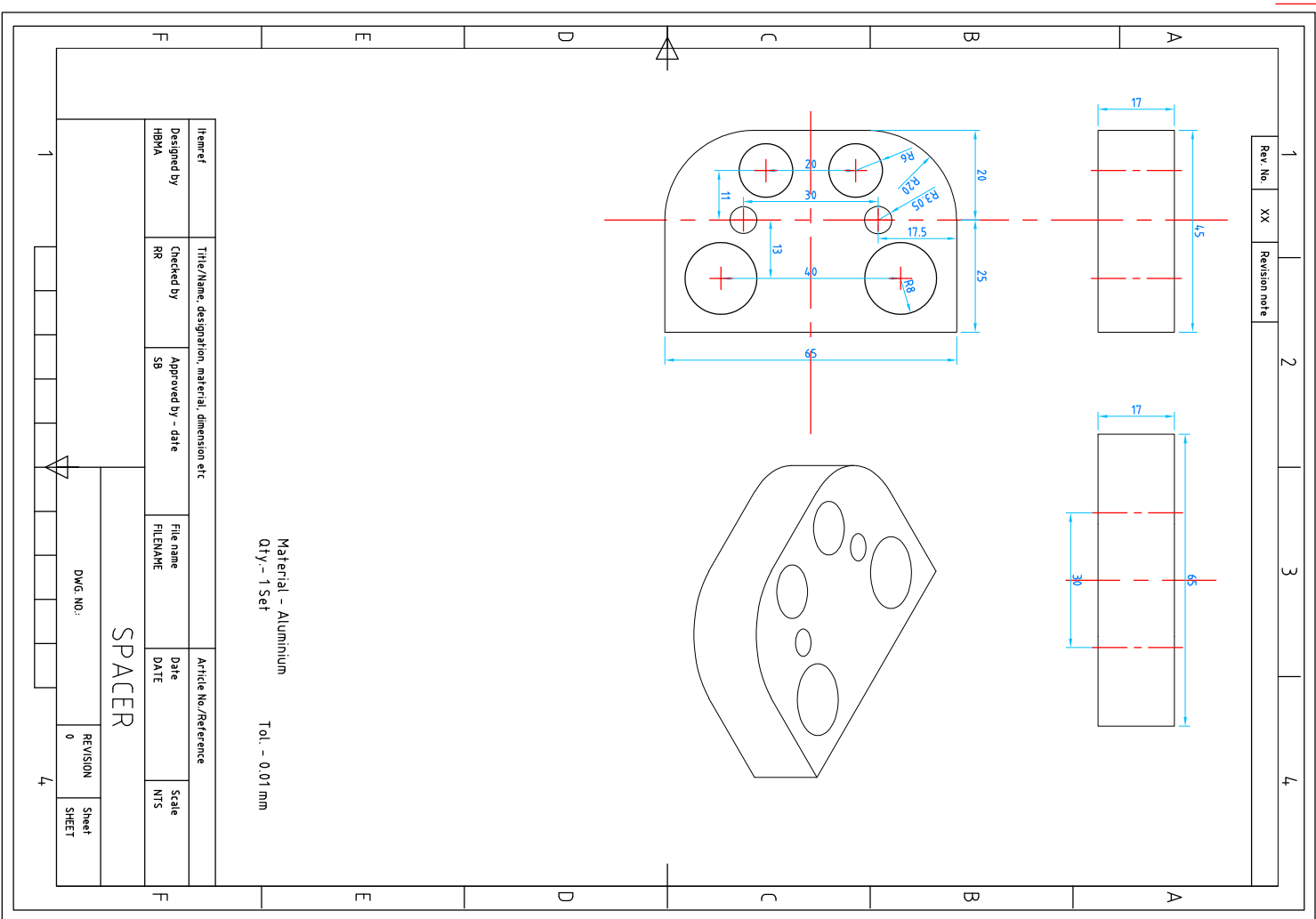
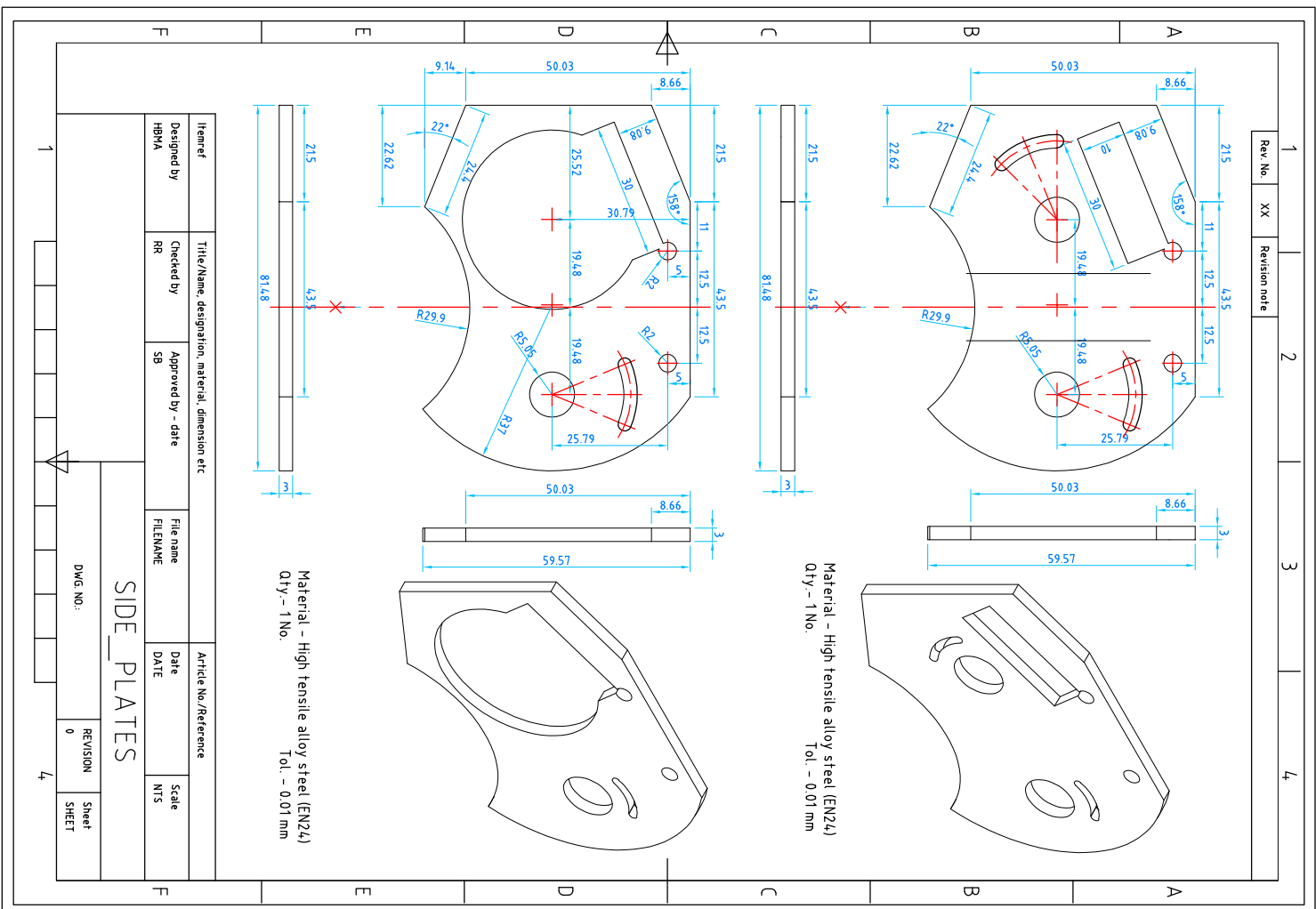
Material - High tensile alloy steel (EN24)
Qty - 1 No.
Tol. - 0.01 mm



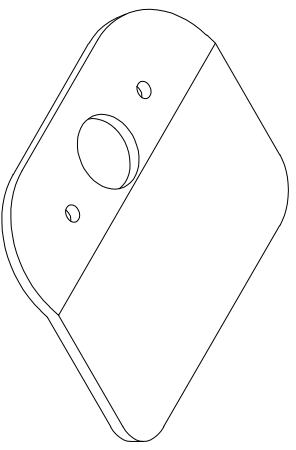
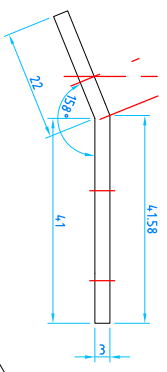
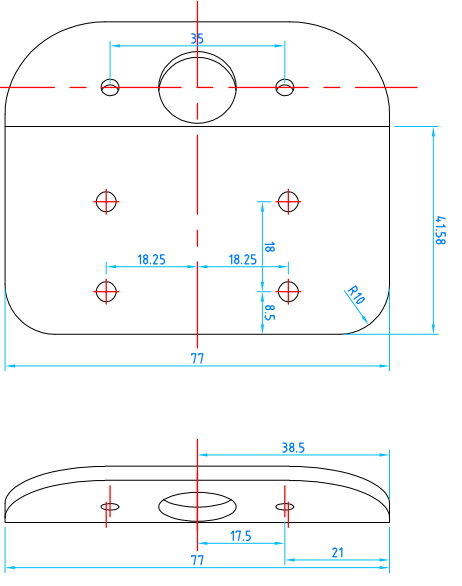
Item#	Title/Name, designation, material, dimension etc			Article No./Reference	Scale
Designed by HBMA	Checked by RR	Approved by - date SB	File name FILENAME	Date DATE	NTS

SIDE_BARS

DWG. NO.:	REVISION	Sheet
	0	SHEET



1	Rev No.	XX	Revision note	2	3	4
---	---------	----	---------------	---	---	---

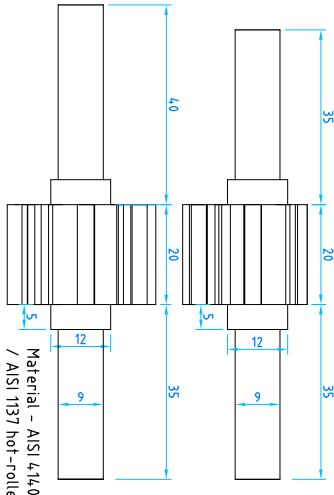
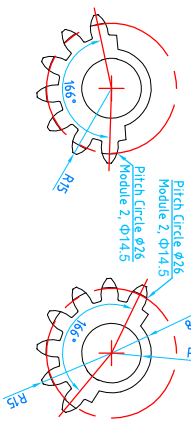
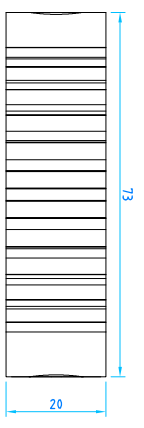
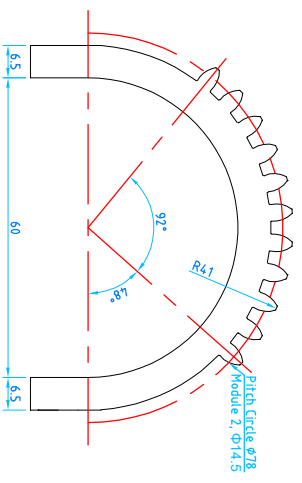


Material - High tensile alloy steel (EN24)
Qty - 1 No.
Tol - 0.01 mm

Item#	Title/Name, designation, material, dimension etc	Article No./Reference	Scale
Designed by HBHA	Checked by RR	Approved by - date SB	FILENAME DATE
TOP_PLATE		REVISION	Scale MKS
		0	SHEET

DWG NO.:		REVISION	Sheet
		0	SHEET

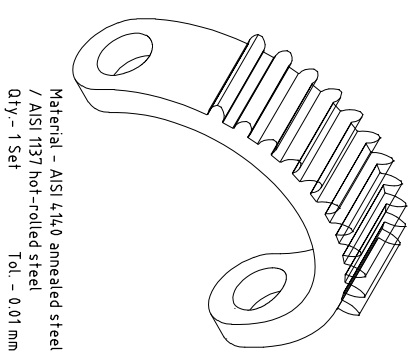
1	Rev No.	XX	Revision note	2	3	4
---	---------	----	---------------	---	---	---



Material - AISI 4140 annealed steel
/ AISI 1137 hot-rolled steel
Qty - 1 No. (each)
Tol - 0.01 mm

Item#	Title/Name, designation, material, dimension etc	Article No./Reference	Scale
Designed by HBHA	Checked by RR	Approved by - date SB	FILENAME DATE
SECTOR_GEAR		REVISION	Scale MKS
		0	SHEET

DWG NO.:		REVISION	Sheet
		0	SHEET

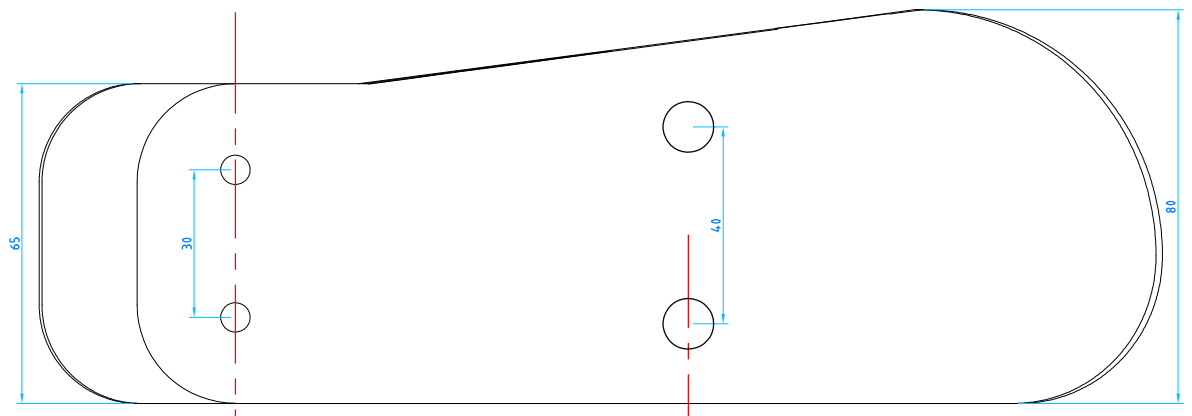


Material - AISI 4140 annealed steel
/ AISI 1137 hot-rolled steel
Qty - 1 Set
Tol - 0.01 mm

1	2	3
RevNo	Revision note	

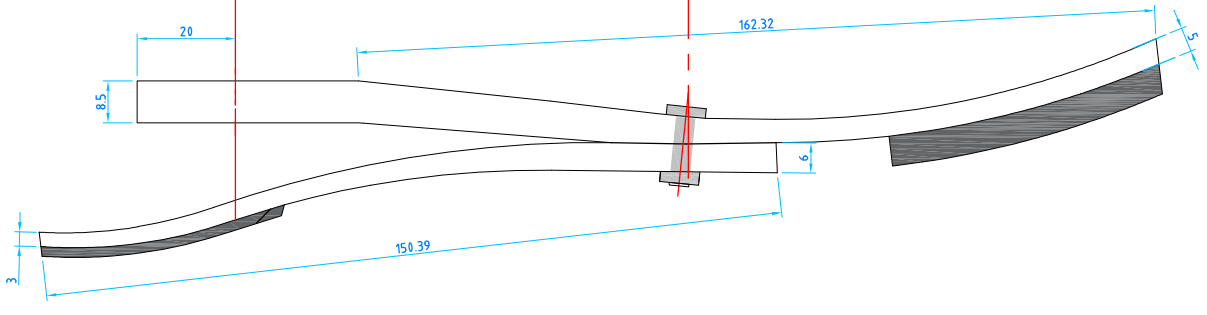
A

A



B

B

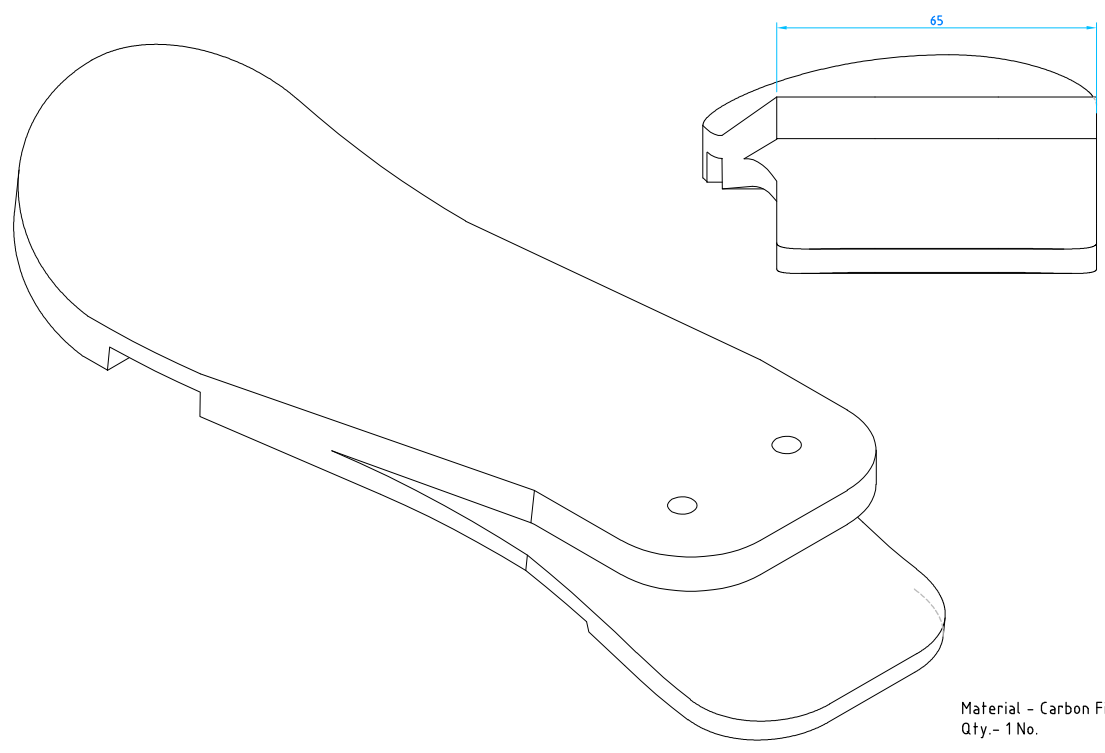


C

C

D

D



E

E

Material - Carbon Fibre Composite
 Qty.- 1 No. Tol. - 0.1 mm

F

F

Itemref	Title/Name, designation, material, dimension etc			Article No./Reference	
Designed by YOUR_NAME	Checked by CHECKED_BY	Approved by - date APPROVED_BY_DATE	File name FILENAME	Date DATE	Scale NTS
			FOOT		
			DWG. NO.:	REVISION 0	Sheet SHEET

1

4